

Pesky Gulls Wall Hanging

Pattern for 9" x 12" WoolFelt
Home Décor Project



Elizabeth Coughlin Designs
ecoughlindesigns.etsy.com
ecoughlindesigns.blogspot.com

Pesky Gulls Wall Hanging

Cotton Home Décor Project - Finished size is approximately 16.5" x 20.5".

Copyright 2021 Elizabeth Coughlin

For personal use only, do not sell items made using these designs. Purchase of pattern does not constitute transfer of copyright or license for commercial usage. All Rights Reserved.

Elizabeth Coughlin Designs Blog:

ecoughlindesigns.blogspot.com

My Etsy Store:

ecoughlindesigns.etsy.com

Background Fabric Requirements:

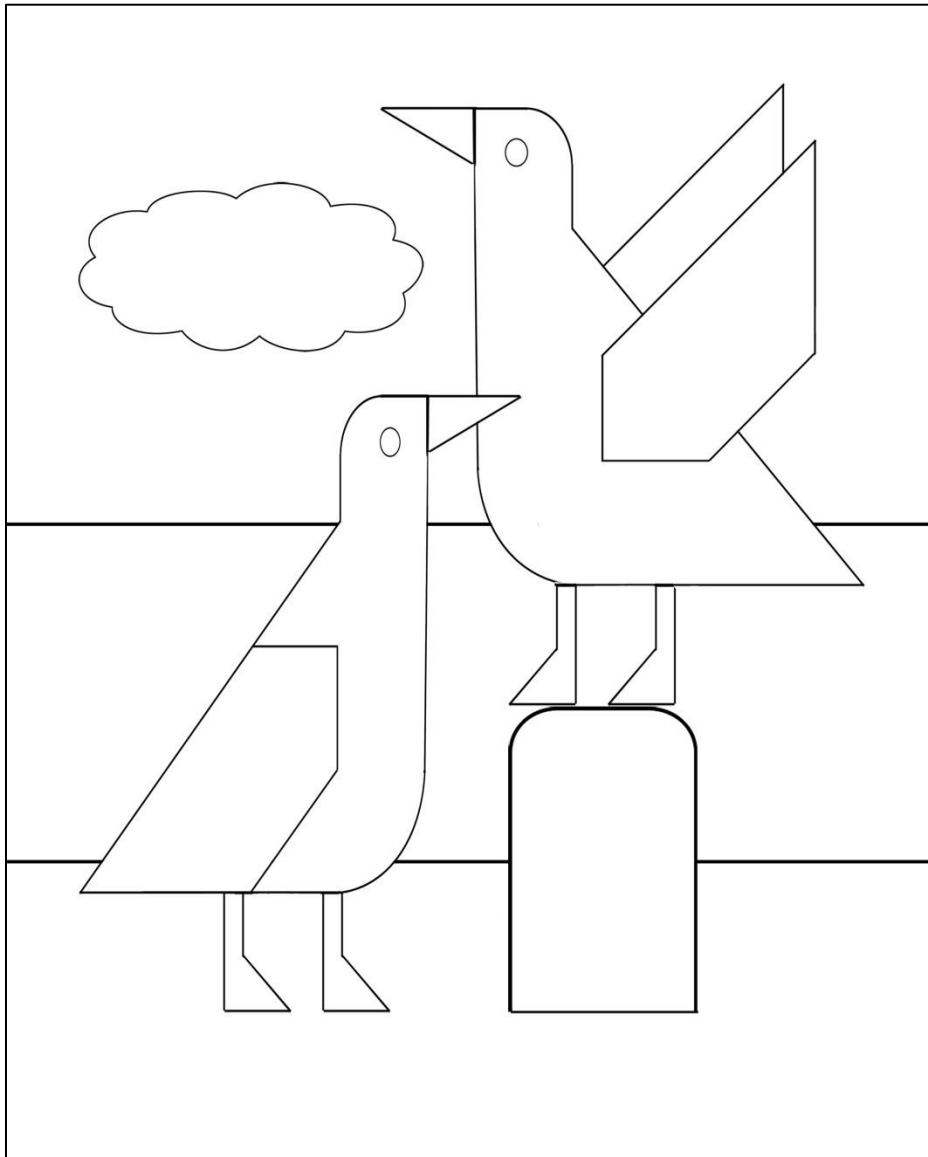
- 9.5" x 16.5" piece for sky
- 6.5" x 16.5" piece for water
- 5.5" x 16.5" piece for pier

Other Materials Needed:

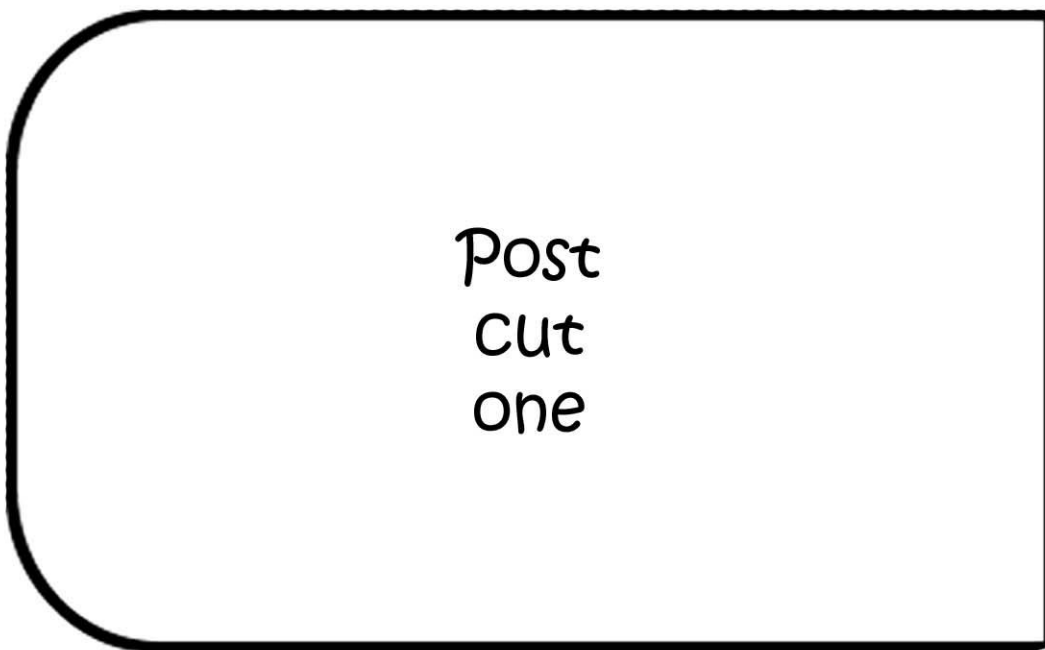
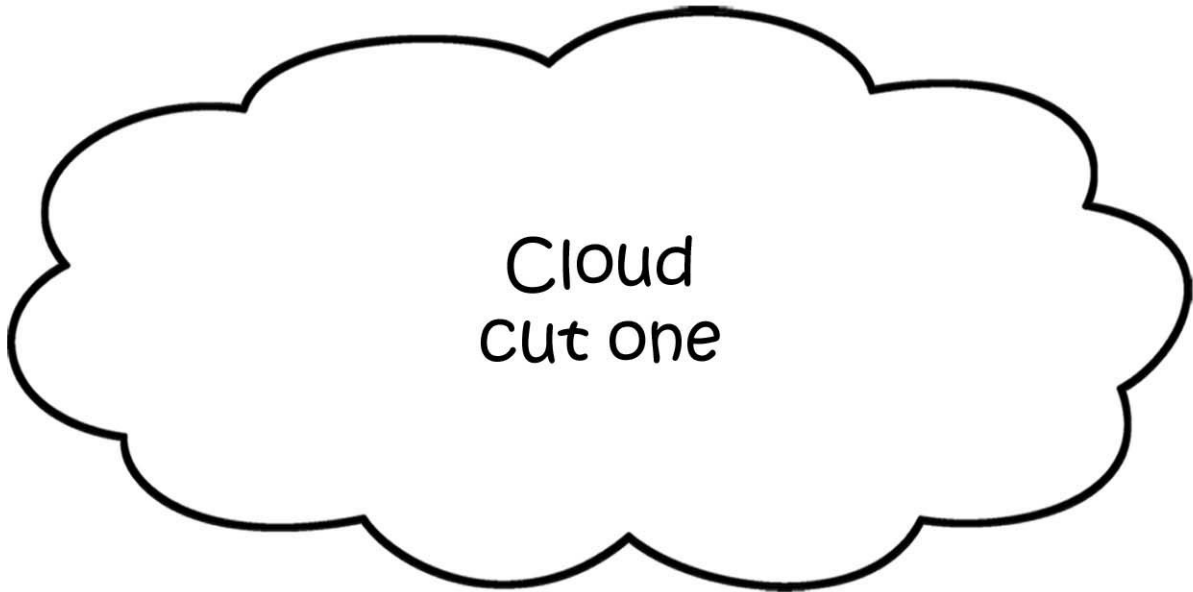
- Fabric for appliques (see patterns)
- Batting and backing fabric
- Binding fabric
- Sewable fusible bond
- Thread or embroidery floss for piecing background, appliqueing, and quilting
- Scissors, needles, pins and other standard quilting items.

Assembly

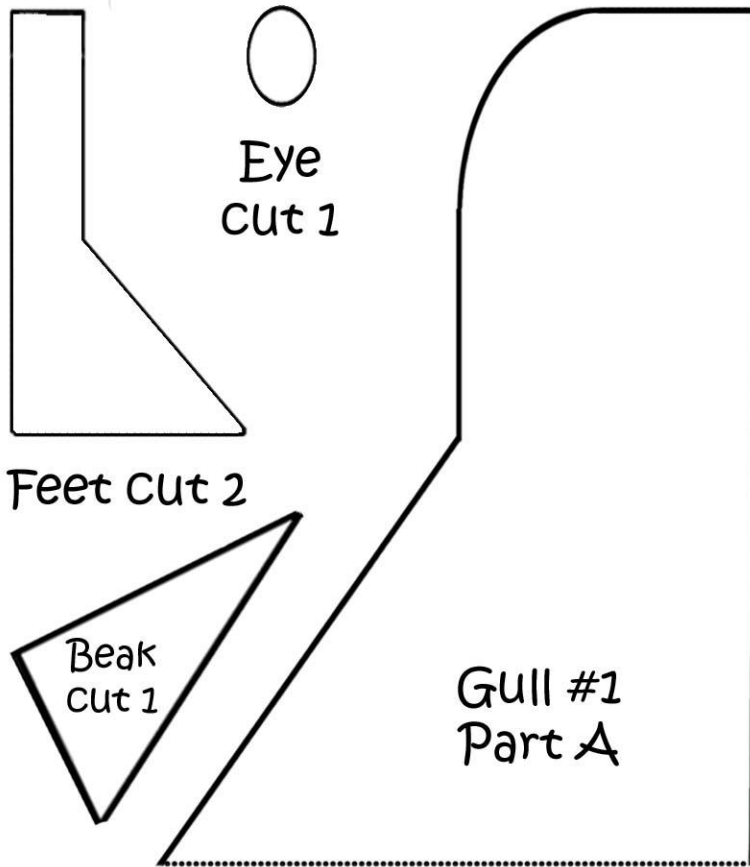
- Piece the background, starting from top: Sky, water, and pier.
- Position applique pieces as shown in diagram. Layer the back wing of the gull on the post, and the feet and beaks on both gulls, behind the gull bodies. Layer the rest of the appliques on top. Fuse and stitch.

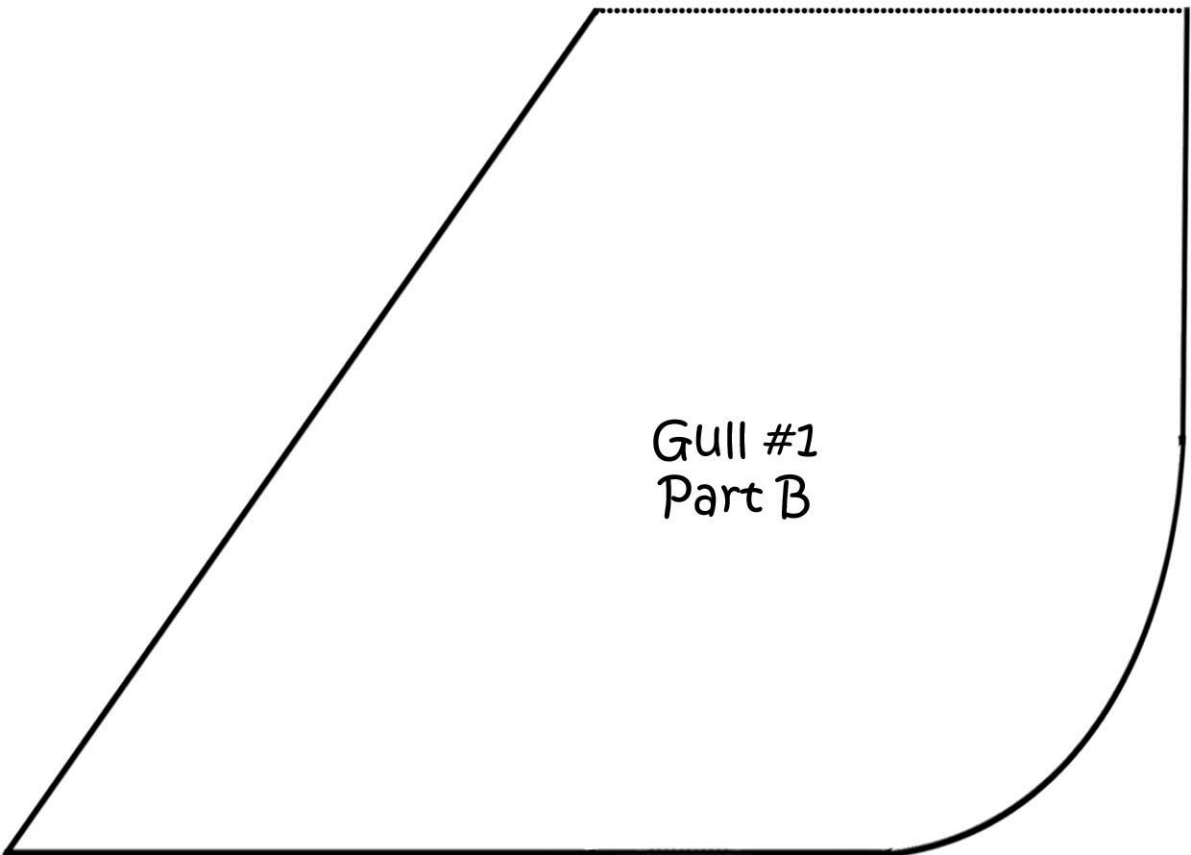


- Quilt and finish as desired.



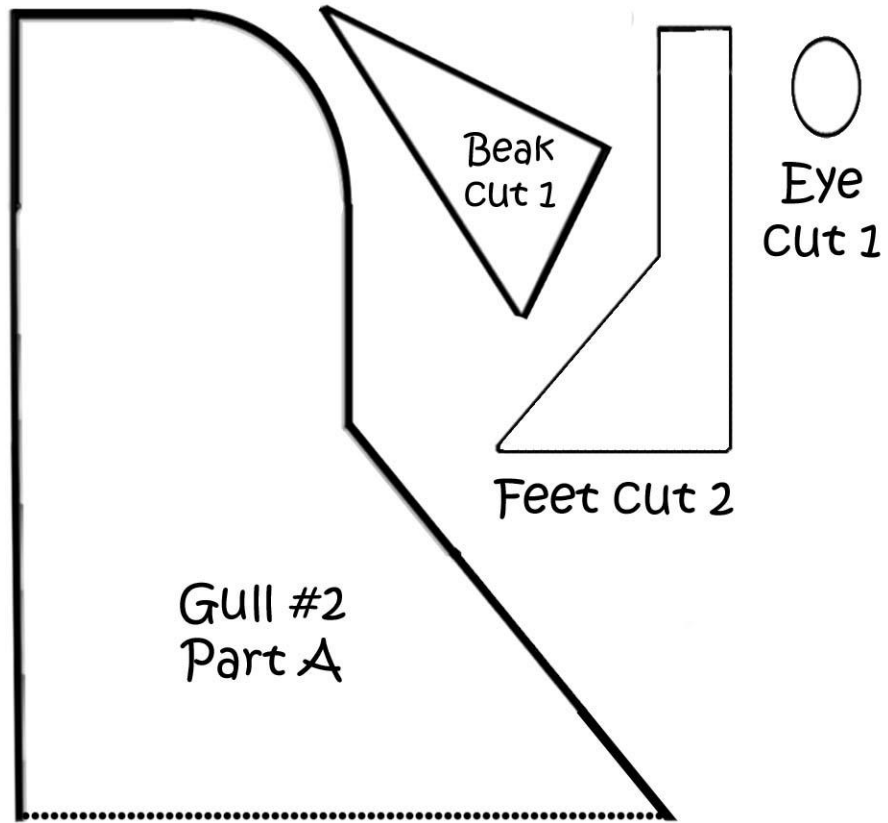
Gull # 1 Patterns

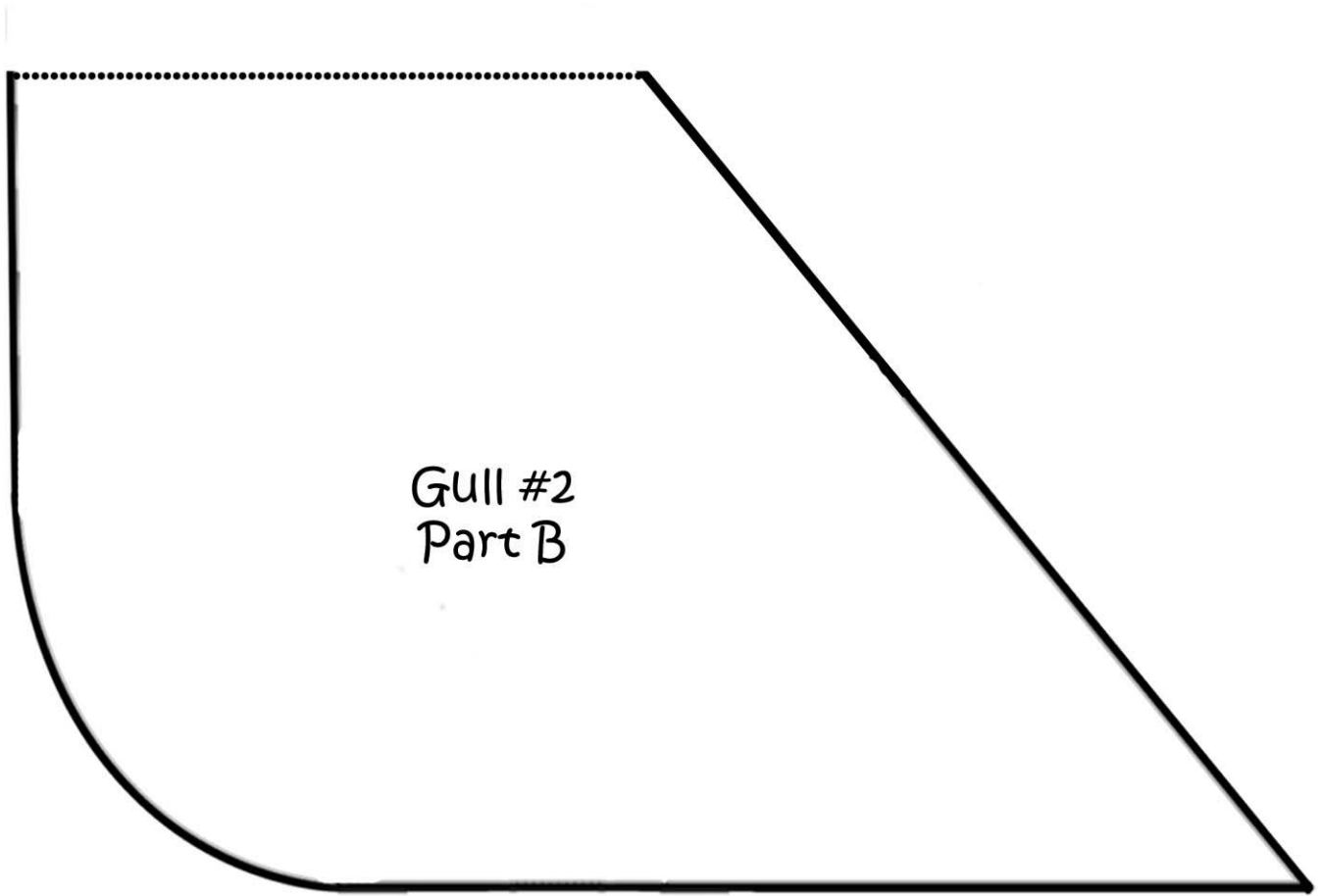




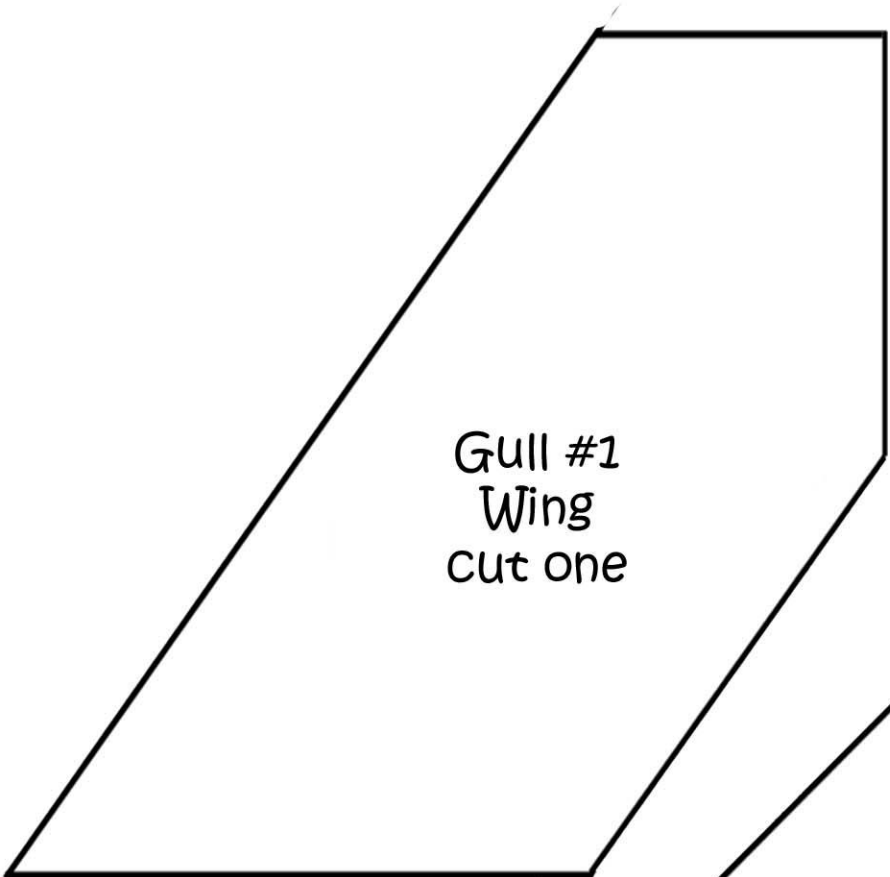
Gull #1
Part B

Gull # 2 Patterns

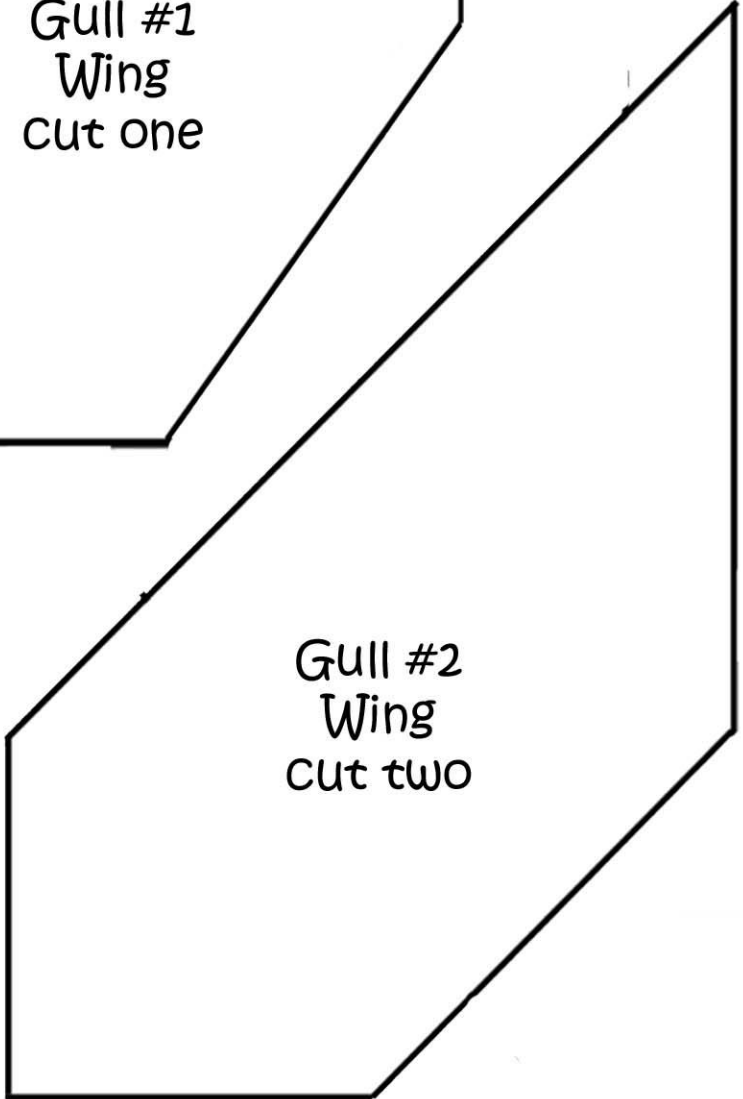




Gull #2
Part B



Gull #1
Wing
cut one



Gull #2
Wing
cut two