

# Hexi-Pumpkin Candle Mat

Pattern for 12" Cotton and  
WoolFelt Project



copyright 2013  
Elizabeth Coughlin

# Hexi-Pumpkin Candle Mat

---

Cotton and WoolFelt Home Décor Project  
Finished size is approximately 12"

Copyright 2013 Elizabeth Coughlin  
ecoughlindesigns.blogspot.com  
ecoughlindesigns.etsy.com

For personal use only, do not sell items made using these designs.  
Purchase of pattern does not constitute transfer of copyright or license for commercial usage.  
All Rights Reserved.

## Materials:

---

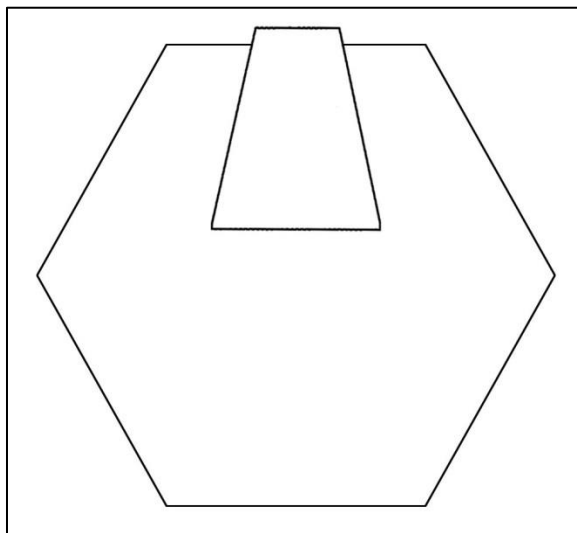
- Three coordinating pumpkin-toned fabrics in the following sizes:
  - Cotton Fabric #1 -- 15"w x 9"h piece
  - Cotton Fabric #2 -- 15"w x 9"h piece
  - Cotton Fabric #3 (for the center) -- 5"w x 9"h piece
- Brown wool felt for stems -- 6"w x 5"h piece
- Green wool felt for leaves -- 8"w x 3"h piece
- Fusible Fleece in following sizes:
  - 5"w x 4.5"h (1 piece)
  - 15"w x 4.5"h (2 pieces)
- Green embroidery floss (Use 3-strands if using 6-strand floss)
- Sewing thread to match your fabrics
- Sewing machine
- Hand sewing needle
- Scissors, freezer paper, pen, iron, bone folder or other blunt tool.

## Instructions:

---

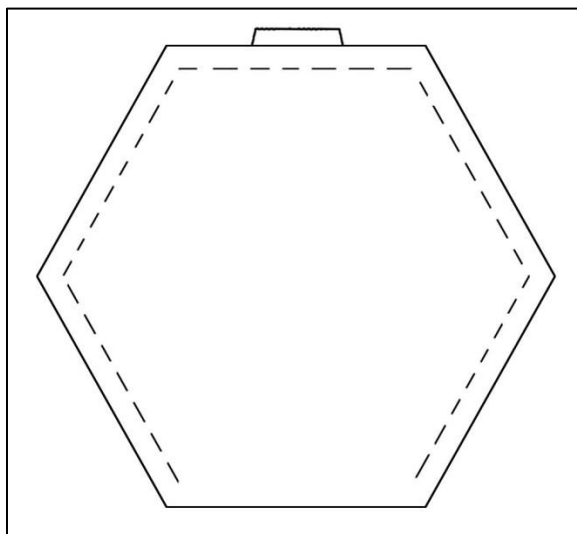
- Trace all pattern pieces onto freezer paper, in the numbers described below.
- Cut the three cotton fabrics in half, lengthwise, to get two pieces from each in the following sizes:
  - Fabric #1 -- 15"w x 4.5"h pieces
  - Fabric #2 -- 15"w x 4.5"h pieces
  - Fabric #3 -- 5"w x 4.5"h pieces
- Pair up one half of each fabric with the fusible fleece. Fuse to wrong side of fabric, following manufacturer's instructions.
- To use the freezer paper templates, place them shiny side down on the wool felt. Set the iron to the wool setting with no steam; the iron must be dry. Iron the freezer paper onto the wool felt, pressing down for a few seconds until the freezer paper sticks.
- From the fused pieces, cut out hexagons in the following numbers:
  - Fabric #1 -- 3 hexagons
  - Fabric #2 -- 3 hexagons
  - Fabric #3 -- 1 hexagon
- From the non-fused fabric, cut out hexagons in the following numbers:
  - Fabric #1 -- 3 hexagons
  - Fabric #2 -- 3 hexagons
  - Fabric #3 -- 1 hexagon
- Place stems on right side of three fused hexagons made from fabric #1 and three fused hexagons made from fabric #2. Lay stems upside down, with a 1/4 overhang at top (see Figure A).

**Figure A**



- Layer matching non-fused hexagon on top, right side down. Pin together, catching stem with a pin. Sew on all sides but bottom (side opposite stem) with 1/4" seam allowance (see Figure B).

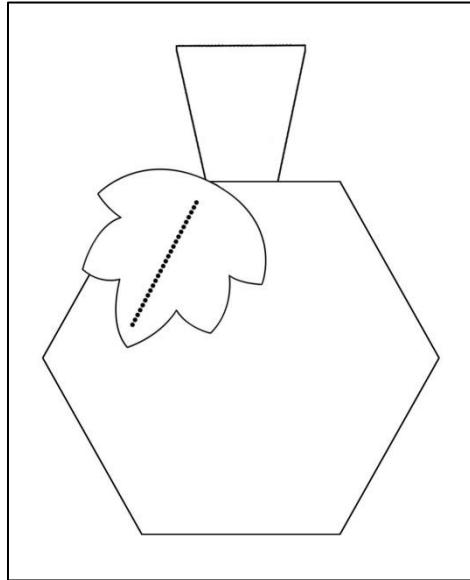
**Figure B**



- Turn right-side out, using bone folder to poke out the sides and corners. Fold in bottom 1/4" and pin. Whipstitch to close. Press pumpkin.
- Prepare six pumpkins in this fashion; you will have three each of fabrics #1 and #2.
- Prepare one hexagon in the same manner but without a stem from fabric #3. This is the center of the candle mat.

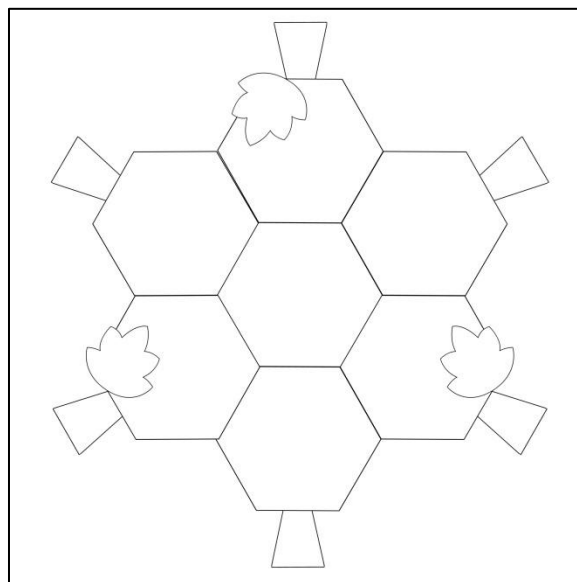
- Attach leaves to the three pumpkins of one fabric type (fabric #1 or #2), using the green floss and backstitch. Sew through top layer of fabric only (see Figure C).

**Figure C**



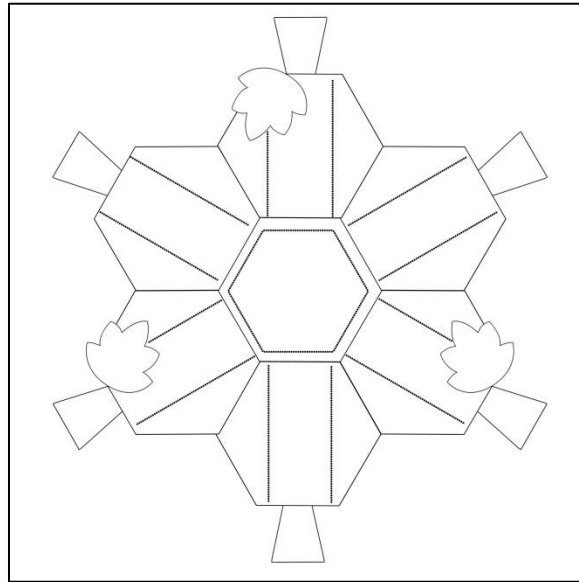
- Attach pumpkins to the center hexagon with whipstitch on back. Then attach to each other with whipstitch on back (see Figure D).

**Figure D**



- Machine quilt as desired. Suggestions for quilting are shown in Figure E.

Figure E



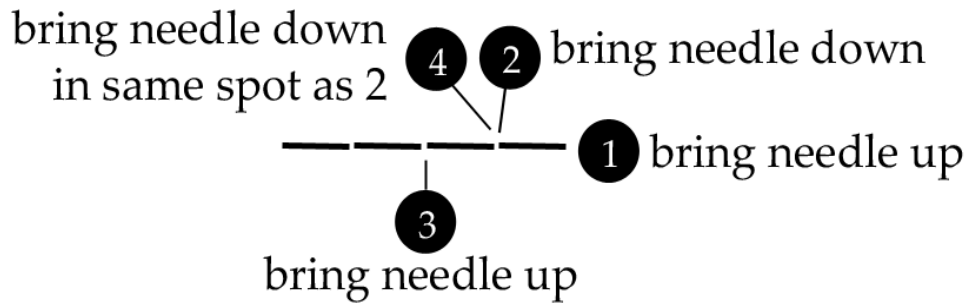
- Press entire candle mat. Finished mat measures approximately 12".

## Stitch Diagrams

---

### Back Stitch

Spaces are shown for ease of reading diagram.  
There should be no spaces in between stitches.



# Patterns

---

